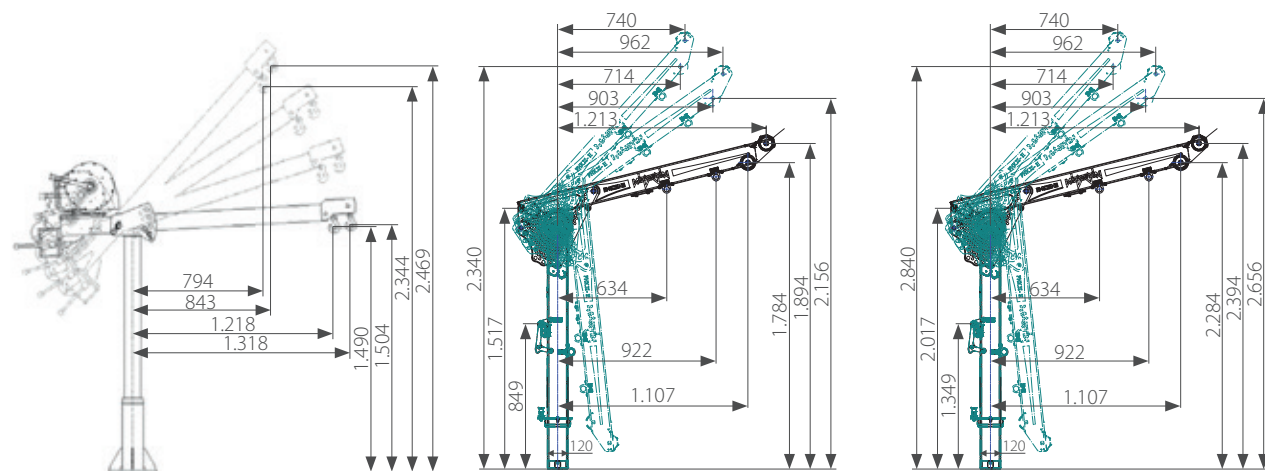


TECHNICAL DATA



www.teamwork-werbung.at

Davit PHK II-S		Davit PHK II-E		Davit PHK II-E XL	
System weight:	approx. 57 kg (incl. load winch and cable)	Powerarm weight:	approx. 40,4 kg	Powerarm weight:	approx. 44,2 kg
		Weight Mast:	approx. 16,7 kg	Weight Mast:	approx. 20,5 kg
		Weight Boom:	approx. 22,7 kg	Weight Boom:	approx. 22,7 kg
Max. height:	2.469 mm	Max. height:	2.340 mm	Max. height:	2.840 mm
Max. load:	500 kg	Max. load:	500 kg	Max. load:	500 kg
Max. reach:	1.318 mm	Max. reach:	1.213 mm	Max. reach:	1.213 mm
Height adjustable:	4-stage	Height adjustable:	3-stage	Height adjustable:	3-stage
Floor mounting:	22 kg	Floor mounting:	approx. 14,5 kg	Floor mounting:	approx. 14,5 kg
Wall mounting:	29 kg	Wall mounting:	approx. 21,5 kg	Wall mounting:	approx. 21,5 kg
Material:	galvanized and coated steel	Material:	stainless (V4A), dipped and passivated steel	Material:	stainless (V4A), dipped and passivated steel

Davit PHK II-S Davit PHK II-E Davit PHK II-E XL		CE	
Load winch with max. 500 kg load-bearing capacity		For use as a personal and fall protection device, statically calculated in accordance to EN 795 and TS16415, type-tested and certified by authorized body.	
"Easy" attachment for the fall arrest and recovery block (HSRG)		Variable cable length up to 30 m	

We reserve the right for technical changes. Every picture is a symbolic and no liability is taken for pictured applications. See user instruction menu!
Lechtaler GmbH taking no liability for improper use and handling.

LECHTALER GMBH MARTIN PSA AND ENVIRONMENT

We follow in all our production chains ecological processes and environmentally compatible ways of production.
All parts are recyclable.

Lechtaler GmbH
MARTIN PSA

LECHTALER GMBH
Flotzbachstraße 33
6922 Wolfurt
Austria
T +43 (0) 55 74 74 000
office@martin-psa.at
www.martin-psa.at



Presented by:

04/2024

Lechtaler GmbH
MARTIN PSA

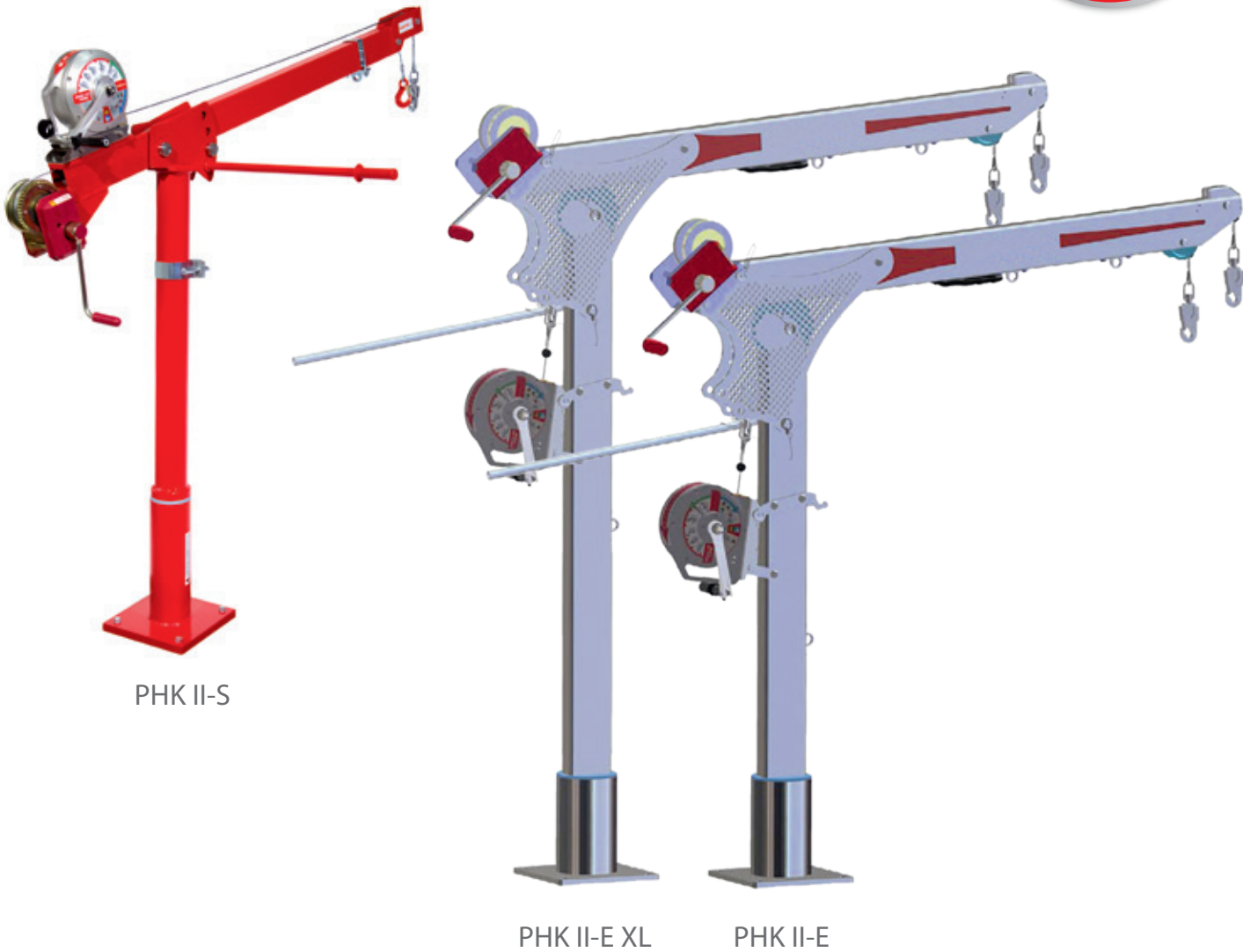
Fall Protection and Rescue Equipment

Powerarm – David PHK II-S
Powerarm – David PHK II-E
Powerarm – David PHK II-E XL

- Approved as a suspension point for personal fall protection in accordance to EN 795 and TS16415
- Lift loads up to 500 kg
- Height-adjustable, pivoting, can be dismantled
- Several anchor points allow three people to be secured
- For mobile use
- Hoist for practically most low weight applications

www.martin-psa.at

three people
to be
secured



Powerarm PHK II-S

The Lechtaler GmbH MARTIN PSA PHK II-S powerarm is manufactured solely from hot zinc dipped steel, making it a powerful partner for securing and rescuing people plus for lifting loads. Thanks to established technology, this system offers the user optimized safety and convenient operation.

BENEFITS:

- **reach:** wide working radius allows flexible work
- **two cable guides:** for securing people with the Lechtaler GmbH MARTIN PSA fall arrest and recovery block (HSRG) and for lifting loads with winch
- **Modular:** assembled and disassembled in a matter of minutes
- **Adjustable:** four-stage height and reach adjustment
- **“Easy” attachment** for HSRG

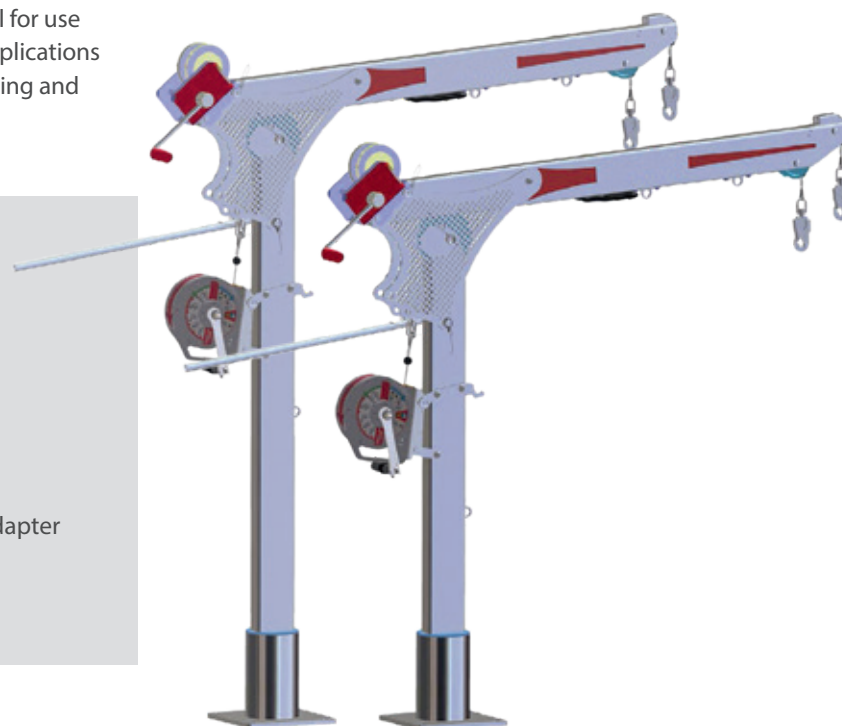


Powerarms PHK II-E AND PHK II-E XL

The Lechtaler GmbH MARTIN PSA PHK II-E and PHK II-E XL are completely manufactured in V4A stainless steel. They are used in sensible areas like waste management, food industries and refineries. Their corrosion resistance makes them ideal for use in offshore, fresh water installations and wind craft applications as personal safety and rescue devices as well as for lifting and lowering loads.

BENEFITS:

- Manufactured in V4A and approved for three people (1 on boom, 2 on mast)
- Mobile usable, modular two part system – quick and easy setup
- 3-stage boom angle setting which counts for shorter or longer reach
- Quick HSRG and winch assembly to “EASY” adapter
- Easy and light pivoting at full load over 360 ° due to central bearing in mast and shaft



BEARING ASSEMBLY

Specially engineered and certified fixtures for various mounting options:

- Wall mounts for concrete walls and round basin installations.
- Floor mounts for surface installation. In steel and stainless steel V4A available.
- Total system set with mounting kit and statical dimensioning.

Various
bearing
assemblies
available

Bearing for the PHK II-S:



Bearing for the PHK II-E and the PHK II-E XL:



APPLICATION

For securing and rescuing people



The PHK II-S, the PHK II-E and the PHK II-E XL are capable of securing one person combined with HSRG. Secure climbing into and out of tanks, vessels or silos. In case of accident or injury, the person can be rescued safely and quickly by just one person and swing out of the hazard zone.

For lifting loads



Loads, devices or pumps can be lowered and lifted using the integrated load winch.

PROTECTION COVER



Protection cover for powerarm
PHK II-S, PHK II-E und PHK II-E XL

With straps to tie up the protective cover

The protection cover is made of
robust truck canvas.